



SCOTTISH BORDERS COUNCIL COUNCIL PLAN

FROM APRIL 2023

Foreword

Welcome to our new Council Plan. In developing the Plan, we have a number of objectives. We want a Plan that:

- I is short and simple but clear in its actions and aims.
- II sets a strategic framework for Council decision-making and operations and for the Council's Financial Plans.
- III operates in sync with the Council's Budget Setting Process.
- IV is informed by strong engagement with Elected Members.
- V is effectively linked with a Performance Management Framework and an embedded culture of continuous improvement.

The previous Council Plan 2022-2023 was presented and agreed on the basis that it was a 'bridge' from the Council's traditional approach to a new and more responsive approach and style of plan. This Council Plan continues that journey.

This year's Council Plan sees a number of important additions:

In Chapter 1 'Strategic Context and Vision', we set out long-term strategic ambitions, which extend beyond the horizon of a single year (in relation to e.g. a Just Transition to Net Zero; Poverty; Low Economic Productivity and Wages; Demography). We do this by identifying the long-term challenges and opportunities we face as a region and as a Council. From those challenges and opportunities we draw out a vision for where we want to be in 10 years' time, by 2033.

The vision gives rise to the actions we intend to deliver across the Scottish Borders in 2023-24 and this is detailed in **Chapter 2** covering '**Scottish Borders-Wide Actions**'. Subsequent Council Plans will build on this process, comprising steps on the road to long-term delivery of our vision for the region.

In Chapter 3 'Locality Actions', we have sought to set out for each of the 5 'localities' of the Scottish Borders clear ambition, action and outcomes in the same way that Chapter 2 seeks to do for the Scottish Borders as a whole. This is a work in progress, which has taken its lead from our 'Summer Tour' and the place-making events convened across the region.

Our aim over time is to embed Locality Plans as an element of the Council Plan, which can truly be said to:

- Speak to our 'Places' across the Scottish Borders by setting out the priorities for different communities, whether in Berwickshire, Cheviot, Eildon, Teviot & Liddesdale, or Tweeddale;
- Flow from a transformed engagement and co-production with our communities to support a shared ambition for the region.

Foreword

Importantly, the Council Plan has not evolved in a vacuum. On 24 November, the Council agreed the Administration Policy Plan 2022-2027. This document sets out the ambitions of the Council administration – indeed, the whole Council, given the broad support across the Chamber – for the Scottish Borders during the present Council session. The Admin Policy Plan should be seen very much as a twin to the Council Plan. If the Admin Policy Plan is a statement of our ambition, the Council Plan is its delivery vehicle, while the Council's Financial Plans set out how delivery will be funded.

There are three further points to highlight, all addressed in Chapter 1.

- › Values matter. They help establish the culture we want to shape our decision and actions. In light of this, we begin chapter 1 with a note of our values, which in their focus on people, fairness, sustainability, and agility resonate throughout the document.
- › The Council must change to meet to the challenges and to grasp the opportunities of the future. This will beg hard questions of all of us, but unless we face those questions, we risk falling short.
- › The Council cannot do it on its own. Again, if the Scottish Borders is to successfully meet future challenges and grasp future opportunities, this requires everyone to play their part. We set out a number of commitments we make as a Council, and set out 'asks' of you which will help the Council to achieve more. **#yourpart**

This is a shared endeavour and we look forward to carrying on the journey with you.

Our values
How we approach the plan and our service delivery

Our challenges and opportunities
The landscape in which we and our communities operate

Our Vision and Priorities
The way in which we respond to these challenges in the long-term.

Our Outcomes and Actions
How we will address these challenges over the year 2023-2024.

Lastly, while seeking to progress the Council Plan we will also continue to deliver for the Scottish Borders, on a day to day basis, constantly striving for 'routine excellence'. The next page provides a snapshot of these efforts.



A handwritten signature in black ink, appearing to read 'Euan Jardine'.

Councillor Euan Jardine
Leader of Scottish Borders Council

Delivering for the Scottish Borders



Clean Green Future

Incorporating biodiversity and nature restoration across 950 hectares of greenspace.

Collecting the waste of over 59,000 households, and managing over 70 recycling points and 7 community recycling centres, while achieving the top recycling rate for rural councils.



Fulfilling Our Potential

Delivering high quality education to over 16,000 children across 59 primary schools and 9 secondary schools.

Delivering over 1.5 million school meals per year to pupils across our primary and secondary schools.



Strong Inclusive Economy, Transport and Infrastructure

Maintaining over 1,800 miles of public roads across the region, as well as some 490 miles of public footway, more than 1200 bridges and structures and 860 miles of walking and access routes.

Last year, bringing in £5.5 million of additional funding to spend on 24 Economic Development projects.



Empowered, Vibrant Communities

Supporting over 80 community groups with £274,000 in grant funding through our Community Fund and £499,000 to 77 groups via our one-off 'Build Back a Better Borders Recovery Fund'.

Supporting our communities through the cost of living crisis by providing £1.2m of additional funding.



Good Health and Wellbeing

Providing over 10,500 Care at Home Hours and over 14,500 Supported living hours per week to support people to live at home independently.

Maintaining 187 play parks.

Paying a living wage to the largest workforce in the Region, Scottish Borders Council, delivering excellent services daily



Working Together
Improving Lives



CHAPTER 1: STRATEGIC CONTEXT AND VISION

Strategic Context and Vision: Our Values



People Focused -
working collaboratively with colleagues
& partners, everything we do is for the
benefit of our communities



Inclusive & Fair -
we ensure everyone has the best
opportunities & always seek to act fairly



Agile -
we take advantage of new opportunities
to deliver good value for money and we
maximise the use of all digital opportunities



Sustainable -
we are passionate about the prospects of
future generations, we demonstrate this in
our decisions and delivery and ensure we
live within our means

Strategic Context and Vision

Our Challenges and Opportunities

We face a time of huge challenges. Some of these challenges are global or national, such as the mutually reinforcing climate and nature emergencies, the worst cost of living crisis in a generation, record levels of inflation, spiralling levels of poverty, the legacy of a two-year pandemic, and a confluence of exceptionally difficult labour market and trading conditions. Others are more closely linked to our region: low economic growth and pay, challenges surrounding transport and infrastructure, and an aging population which will put additional pressure on our public services. All challenges are, ultimately, local. All will be felt and experienced in our communities.

Yet, as the saying goes, 'in the middle of difficulty lies opportunity'. We can't be glib, of course. We must identify our opportunities, call out our challenges, set out what we want to achieve and work out how we get there.

What we're concerned with are big long-term challenges and opportunities. These are not the kind of challenges or opportunities that can be gripped overnight, or in a single year. They are complex. They require concerted and sustained action, not just by the Council, but by our governments, partners, businesses and communities. The pandemic showed, working with partners, the Council could act 'fast', marshalling all available resources to deliver strong and responsive services to best meet the needs of communities.

As the Council confronts further real terms funding reductions, it is increasingly clear, we must go much further transforming the Council, how we work with our partners, and, most significantly of all, how we empower and support our communities to achieve what matters to them.

Our Vision and Priorities

Pages 9 to 14 take the challenges the Scottish Borders faces and seeks to build a positive vision out of them. For example, responding to the Climate and Nature Emergencies is a necessity for our and our children's future.

But by greening our economy and harnessing our region's outstanding natural capital, we can also build a stronger, more inclusive economy, and a more skilled and prosperous population. Similarly, poverty, our region's economic under-performance and the cost of living crisis require short-term interventions, but they are also a clarion call to continue to improve the delivery of high quality education and skills in the region, and for greater ownership and control of assets and economic levers within our communities.

The Council Plan is based on 6 outcomes that we aim to deliver for the Scottish Borders. Five of the outcomes focus on improving the wellbeing of citizens within the Scottish Borders and making our region a more sustainable and better place to live, work in and to visit. The sixth outcome is about developing a Council that is as effective and efficient as it can be – we need to do this in order to deliver on the other five outcomes. As our aim is to ensure consistently high quality across all we do as a Council, the 'Working Together Improving Lives' theme is reflected in our area-wide outcomes and actions and not within the outcomes and actions set out in 'Locality Outcomes and Priorities'.

FOCUS	OUTCOMES
Improving the wellbeing of citizens within the Scottish Borders and making our region a more sustainable and better place to live, work in and to visit.	1 Clean Green Future
	2 Fulfilling Our Potential
	3 Strong Inclusive Economy, Transport and Infrastructure
	4 Empowered, Vibrant Communities
	5 Good Health and Wellbeing
Developing a Council that is as effective and efficient as it can be.	6 Working Together Improving Lives

Strategic Context and Vision

Our Vision and Priorities

Responding to our challenges, we have set our visions 10 years in the future. From those visions, we extrapolate priorities, which animate our proposed outcomes and actions for 2023-2024.

However, we can't get there, unless we make sure that the Council is also ready to meet these challenges. As highlighted in the previous page, Council budgets continue to fall and are under significant pressure from rising inflation, among other things. The policy landscape is complicated and fast changing.

So what does a 'future-ready' Council mean in practice? In short, it means a Council which is:

- > Designed to meet people's needs
- > Able to unlock community action
- > Focused on tackling inequality while striving to meet the needs of all our citizens
- > Committed to digital, design and technology enabled transformation
- > Focused on delivering outcomes through working in partnership

As the final bullet point suggests, working in partnership is essential. No one organisation can do it alone. For the Council, the most vital partnership of all is that partnership we have with you as a citizen of the Scottish Borders.

To improve lives, we must work together. A keynote of our approach in this Council Plan, as it was in the Council Plan 2022-2023, remains the recognition that, if the Scottish Borders is to meet future challenges and grasp future opportunities successfully, this requires everyone to play their part: from the Council delivering services to volunteers supporting communities throughout the Scottish Borders; from the Council reducing its greenhouse gas emissions to residents seeking to reduce their waste and to put the right things in the right bins.

The below sets out our commitment to you – 'our part' – in working together and improving lives. It also sets out 'your part' – the 'asks' we have of you, which will help us in delivering 'our part'. **#yourpart**

OUR PART	#YOURPART
Listen, be honest, kind and respectful.	Get involved in your community.
Design our ways of working around you and your community.	Be a good neighbour, take pride in your local area and respect your surroundings.
Support local communities in delivering on the outcomes that matter to them.	Have your say and let us know if we get it right or wrong.
Make partnership working our default way of working.	Help children and young people to be the best they can be.
Make the Scottish Borders a good place to grow up, live in and enjoy a full life	

Strategic Context and Vision: Clean Green Future

Challenges

The Climate and Nature Emergencies

Opportunities

Creating a green economy built upon our region's outstanding natural capital

Our 2033 Vision for the Scottish Borders

We met the 75% target of reducing greenhouse gas emissions in 2030, and continue to transform the region and our organisation.

Increasingly, we live and work in energy efficient homes and premises, powered by green energy sources.

We walk, wheel and cycle to get around for the most part, use hydrogen buses and trains for longer journeys or, occasionally, electric vehicles.

Nature is recovering in our settlements and across the region, while 'refuse, reuse, reduce, recycle' is the way we live now.

Our Priorities 23/24

Accelerate action to adapt to and mitigate the effects of climate change and extreme weather.

Strategic Context and Vision: Fulfilling Our Potential

Challenges

Poverty related attainment gap
Impact of the pandemic on well being and attainment

Opportunities

High quality education and high skills, maximising life chances

Our 2033 Vision for the Scottish Borders

By 2033, everyone in the Scottish Borders will have the opportunities to acquire the knowledge and skills needed to realise their full potential, and the Borders will be a place where people grow and develop into high skilled, happy and healthy global citizens.

Our Priorities 23/24

Empowering schools and their communities to deliver a high quality education focused on excellence, equity, wellbeing and improved outcomes for children, young people, and families.

Strategic Context and Vision: Strong Inclusive Economy, Transport and Infrastructure

Challenges

Poverty, lack of growth and the cost of living crisis

Connectivity challenges

An ageing population with fewer workers

Opportunities

Creating a green economy built upon our region's outstanding natural capital.

An inclusive, well-connected and sustainable economy

An economy shaped by strong engagement from local people and communities, where people want to live and work

Our 2033 Vision for the Scottish Borders

Built upon strong and effective physical and digital connections and infrastructure, the benefits of a productive and sustainable economy are widely shared, enabling us to fulfil our potential in the Scottish Borders and attract others to live, work, study and visit.

With an increasingly higher skilled and higher paid workforce, the Scottish Borders is a place which has begun to fully harness the potential of its communities, attracting resources from beyond our region, using new technology, and growing the number of jobs found in renewable energy, healthcare, and our natural resources.

Our region is well connected internally and with the world beyond, enabling employees to make positive choices to work in the Borders and enjoy the high quality of life here. The extension of the Borders Railway to Carlisle will create new opportunities, supported by an effective network of green powered buses, and a network of paths for walking, wheeling and cycling.

Our Priorities 23/24

Deliver the key economic development programmes for our region, making our economy stronger, greener and more sustainable.

Strategic Context and Vision: Empowered, Vibrant Communities

Challenges

Addressing inequality and the cost of living crisis

Developing more sustainable and connected communities

Opportunities

Distinctive communities with strong identities, culture and heritage and an existing high quality of life

A high quality natural and built environment

Giving communities greater control of their destinies

Our 2033 Vision for the Scottish Borders

Built on an established track-record of co-production, delivery, and strong partnerships, the Scottish Borders is a region of sustainable, well-designed healthy and happy places that reflect the experience and aspirations of our citizens and communities and meet their needs.

Our Priorities 23/24

Support communities and empower people to achieve strong, active, resilient and sustainable communities and to realise opportunities for improving people's lives.

Strategic Context and Vision: Good Health and Wellbeing

Challenges

Growing health and social care needs, across our communities

Increasing numbers of people with complex health needs

Shortages of staff across Health and Social Care

Poverty and health inequalities

Legacy of the pandemic resulting in increased waiting times for primary care, social work/care and hospital care

Opportunities

A positive story of long healthy, happy and fulfilling lives

Well supported carers

Opportunities presented by the use of technology

Homes and workforces adapted to future needs

Integration of person centered services across health and social care

Improved engagement with communities around local health and social care needs

Increased career opportunities and benefits for the workforce

Our 2033 Vision for the Scottish Borders

The people of the Scottish Borders have the opportunities and are supported to take control of their health and wellbeing, enjoying a high quality of life.

This is enabled by seamless community-based services which are based on local need, with a focus on improving access, early intervention and prevention, reducing inequalities, supporting unpaid carers and the embrace of new technologies.

Services are delivered by a highly valued and motivated workforce.

Our Priorities 23/24

Ensure the people of the Scottish Borders have the opportunities and are supported to take control of their health and wellbeing, enjoying a high quality of life.

Strategic Context and Vision: Working Together, Improving Lives

Challenges

A constrained budget

A changing policy landscape

Opportunities

A Council fit to support the future needs of our communities

Our 2033 Vision for the Scottish Borders

A fully effective council which is an exemplar of excellent organisational and budgetary performance, and of how to harness the combined power of local communities, institutions and stakeholders in delivering a sustainable future and an economy that works for everyone.

Our Priorities 23/24

Ensure that Scottish Borders Council is effective, sustainable, responsive and aligned to the needs and priorities of our communities.

The image features a dark grey background with a decorative header at the top consisting of four colored rectangular segments: orange, purple, teal, and light green. The main text is centered in the upper half of the page. The background is also decorated with several faint, overlapping circles of varying sizes and opacities.

CHAPTER 2: SCOTTISH BORDERS-WIDE ACTIONS

CLEAN GREEN FUTURE

PRIORITY: Accelerate action to adapt to and mitigate the effects of climate change and extreme weather



Outcomes

- Reduction of greenhouse gas emissions to meet or exceed our targets to deliver Net Zero by 2045
- Services and infrastructure that are ready to meet the needs of our communities in the face of climate change and extreme weather events.
- Enable change through increased public understanding of the need to change our behaviour around how we use resources and the need for increased resilience across our communities
- An approach to energy in the Scottish Borders which is robust, affordable and does not contribute to climate change
- Protected, managed and restored environments which support the wellbeing of people and nature

Action

Ensure the Council is on track to meet its emissions targets comprising:

- An organisational target of Net Zero by 2045
- A 20% reduction in fleet fossil fuel consumption (petrol, diesel) consumption and a 20% reduction in business mileage, where employees use their own car by 2024-2025
- 5% waste to landfill by 2025 and zero biodegradable municipal waste to landfill by 2025
- Development of a target for direct emissions associated with the Council's estate by 30 November 2023

- Commission/Undertake a regional climate risk assessment with Edinburgh and South-East Scotland City Region partners to ensure our region is resilient to climate impacts and extreme weather events
- Complete an extreme weather assessment of key coastal infrastructure and bridges
- Increase the total percentage of sub-3.5 tonne Council Fleet all electric vehicles to 45%

- Promote action on Net Zero by 2045 through proactive engagement with communities as part of Place-Making
- Increase allotment creation and participation through year two of 'Cultivating Communities' (the Scottish Borders Community Food Growing Strategy)
- Roll out a Schools Resource Pack to all primary schools that promotes sustainability, recycling, and eco-friendly practices linked to the Curriculum for Excellence

- By 31 December 2023, develop a Local Heat & Energy Efficiency Strategy (LHEES) that sets out how we will decarbonise buildings across the region, commencing LHEES delivery phase in 2024
- Agree a Scottish Borders Energy Investment Plan Pilot through the Borderlands Energy Master Plan to invest in, test and develop robust, affordable and sustainable local energy systems
- Working with partners and key regional stakeholders develop a delivery plan to retrofit domestic housing, which builds on current retrofit schemes

- Submit Business cases for Borderlands Natural Capital to UK Government (including species-rich grassland agri-environment, integrated land use and woodland creation, and Tweed catchment environmental projects)
- By the end of 2023, (with partners) develop a South of Scotland Regional Land Use Framework (RLUF) on how to use a natural capital approach to agree and prioritise potential land use changes across the region that support the delivery of climate and biodiversity objectives
- Complete review of the Council's greenspace maintenance operations to identify opportunities for improved environmental management

Quarter

Q4

Q3

Q2
Q4

Q4
Q1

Q2

Q4

Q3

Q2

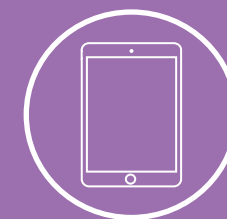
Q1

Q4

Q2

FULFILLING OUR POTENTIAL

PRIORITY: Empower schools and their communities to deliver a high quality education focused on excellence, equity, wellbeing and improved outcomes for children, young people, and families.



Outcomes

- Raise attainment in literacy and numeracy closing the attainment gap between the most and least disadvantaged
- Raise attainment through improved inclusion, equity and wellbeing for all children and young people
- Improve employability skills to enable sustained positive school leaver destinations
- Increase young people's participation in the planning, provision and delivery of services

Action

- All schools will implement a Learning, Teaching and Assessment Framework
- All schools will implement progressive curriculum frameworks for literacy and numeracy
- Implement year 2 of 5 year Equity Strategy to address inequalities and reduce impacts of poverty on attainment
- Embark on a programme of curriculum reform in line with the findings of the national consultation on education and qualifications
- Implement actions identified from health and well-being survey 2022
- Begin the initial planning with Cluster Headteachers to enhance partnership working through "The Team around the Cluster"
- Provide access to mental health supports through the launch of a service directory app to school devices
- Build on the success of 'Get into Summer 2022' to plan provision for children and families to access to food, childcare, wellbeing supports and activities during school holidays
- Extend provision of free school meals provision to all primary school age children
- Implement the revised Positive Relationship Policy in schools
- Scope a programme of staff development, awareness raising and curricular content to develop understanding of Neurodiversity
- Consider and implement the recommendations of the Community Learning and Development (CLD) review
- Provide access to training and upskilling opportunities across the digital landscape
- Identify opportunities for young people to develop skills in new technologies such as green energy or esports
- Provide high quality professional learning to all school staff to support delivery of digital learning
- Continue to develop learning and qualification pathways through partnerships with further and higher education establishments, employers and training agencies
- Create an Engagement Strategy focusing on gathering and acting upon the views of children and young people and which enables them to experience their rights as set out in the United Nations Convention on the Rights of the Child (UNCRC)
- Implement a young person's advisory board to deliver the Engagement Strategy

Quarter

- Q1
- Q1
- Q2
- Q3
- Q1
- Q1
- Q1
- Q1
- Q2
- Q2
- Q1
- Q1
- Q3
- Q2
- Q2
- Q1
- Q3

STRONG INCLUSIVE ECONOMY, TRANSPORT AND INFRASTRUCTURE

PRIORITY: Deliver the key economic development programmes for our region - the [South of Scotland Regional Economic Strategy](#), [Borderlands Inclusive Growth Deal](#) and the [Edinburgh and South East Scotland City Region Deal](#) and [Regional Prosperity Framework](#) – making our economy stronger, greener and more sustainable.



Outcomes

- Seize the opportunities of a just transition to net-zero
- Support our tourism sector, creative industries and our other key industries such as health, social care, construction, land, manufacturing, and food & drink to create a stronger economy where existing and new businesses and social enterprises grow and expand, increasing productivity and investment into the Scottish Borders
- Regenerate our town centres and rural communities
- Enhance digital and transport connectivity
- Support young people and adults who face challenging barriers to finding and maintaining employment and reaching their full potential

Action

- Continue to pursue investment opportunities from off-shore wind for Eyemouth and the Berwickshire Coast area
- Working with partners, assess the feasibility of a Net-Zero accelerator hub to address green skills requirements in a variety of sectors and to grasp future 'green' job opportunities, including in renewables, retrofit, agri-environment, wider land-use and nature restoration
- Secure electrification of the first stage of the Borders Railway and complete a review of our bus network to further support the decarbonisation of transport across the region
- Scope local circular economy opportunities for the Scottish Borders, working with Zero Waste Scotland and South of Scotland Enterprise and agree key priority sectors for development, for example construction materials and reuse of household goods
- Strengthen opportunities to support local supply chains and 'Community Wealth Building'
- Progress the Destination Tweed project as part of the Borderlands Deal
- Deliver a programme of support for international, national and regional events and begin the implementation of SBC's new events strategy
- Progress Borderlands Inclusive Growth Deal projects which support the visitor economy, including the Mountain Biking Innovation Centre in Innerleithen
- Culture and Tourism: Work collaboratively with partners to develop potential employment and economic benefits in the Scottish Borders
- Develop a new culture and creative industries strategy for the Scottish Borders to enhance the quality, variety and accessibility of the cultural experience across the region
- Work with communities and businesses, as part of Place-Making, to drive and target investment in town centres and create healthy local economies
- Maximise opportunities for housing and housing development to help unlock the region's economic potential and supporting the delivery of homes in town centres, including empty homes and shops
- Borders Railway: Progress the feasibility work for the railway extension between Tweedbank and Carlisle
- Complete an electric vehicle charge point feasibility study outlining the potential to install electric vehicle chargers across the Borders
- Progress the roll out of ultra-fast broadband across the Borders as part of the R100 program
- Borderlands Digital Programme: Progress the programme to invest in areas lacking 4G coverage
- Continue to deliver the 'No One Left Behind' and 'Young Persons Guarantee' employability programmes, to ensure the right support is available at the right time, and services are delivered in a joined up and coordinated way

Quarter

- Q3
- Q4
- Q3
- Q3
- Q4
- Q2
- Q1
- Q1
- Q4
- Q4
- Q4
- Q4
- Q1
- Q2
- Q3
- Q3
- Q4

EMPOWERED VIBRANT COMMUNITIES

PRIORITY: Support communities and empower people to achieve strong, active, resilient and sustainable communities and to realise opportunities for improving people's lives.



Outcomes

- Community-led place plans across rural communities and towns to enable communities to take control of their own destinies
- Enhanced participation and engagement which empowers communities to shape the decisions which affect them
- Modern, sustainable and simplified services that meet the needs of communities and customers
- Sustainable use of our land and buildings
- Reduce the number of children in poverty; and reduce the impact of living in poverty on families

Action

- Support communities in the Borderland target towns of Eyemouth, Galashiels, Hawick and Jedburgh to form inclusive Town Teams and develop community-led plans and associated investment plans
- Support the 40+ communities that have expressed an interest in developing community-led plans across the 5 localities
- Deliver good quality homes that meet the needs of the community and consider the wider infrastructure issues and vehicle dependency across the region when planning new build housing
- Implement our Community Engagement Strategy
- Support Area Partnerships to oversee Place Making in their localities and facilitate the development and delivery of community-led place plans
- Develop an options appraisal for the review of area partnerships
- Community Choices: Offer communities a greater say in local spend of Council resources
- Review SBC support for Community Councils
- Engage with service users and communities over how services can be improved, better aligned with demand and local need and delivered in a sustainable way
- Work with communities and groups to:
 - support asset transfers where this is a viable option
 - find sustainable futures for public buildings
 - reduce the number of council owned properties to a sustainable level
- Continue to deliver our Anti-Poverty Strategy
- Provide a range of assistance as a response to the cost of living crisis including financial support and advice with rising energy costs

Quarter

Q4

Q4

Q4

Q2

Q4

Q1

Q4

Q4

Q4

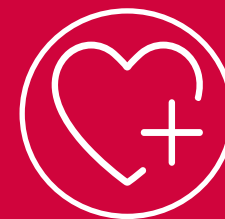
Q4

Q4

Q4

GOOD HEALTH AND WELLBEING

PRIORITY: Ensure the people of the Scottish Borders have the opportunities and are supported to take control of their health and wellbeing, enjoying a high quality of life.



Outcomes

- People of the Scottish Borders are supported and enabled to take control of their health and wellbeing, and enjoy a high quality of life
- Every child grows up loved, safe and respected and able to realise their full potential (The Promise)
- Services are designed around service users' needs, focus on prevention, early intervention and minimising health inequalities
- The right services are commissioned and developed with partners and will meet the outcomes of any future National Care Service
- People have access to quality cultural, play, leisure and sport activities
- Unpaid Carers are well supported

Action

- Publish a locality directory on health / wellbeing and social care services
 - The Health and Social Care Strategic Framework for 2023-2026 will be launched and work commenced on the implementation of its recommendations
 - MacMillan Improving Cancer Journeys: Continue to provide support to this joint partnership venture, which delivers good quality advice and information and emotional support
 - Increase the use of Technology Enabled Care
 - Ensure the provision of the right homes, in the right locations, which are affordable and meet people's needs
 - Reframe the language used in relation to care experienced children, young people and their families across practice, policy and procedure
 - Ensure that all care experienced children and their families will have access to independent advocacy at all stages of their experience of care
 - Review the approach to early intervention services for children and families who require additional support
 - Develop health and care models that are integrated, sustainable and meet the needs of Borders' residents
 - Implement a Health and Social Care workforce plan and develop a workforce plan for Children and Families social work
 - Develop our social prescribing function for care at home and GP's
 - Establish collaboratives for Care at Home and Care Home provision
 - Revise the Commissioning Governance Structure for social care commissioning
 - Map the current commissioning arrangements across social care
 - Develop a Commissioning work plan for three years (from April 2023 onwards)
- Develop and action a Cycling Strategy, a Sport and Physical Education Strategy, and a Library Strategy
- Identifying the needs of unpaid carers at a locality level and developing services to meet those needs.

Quarter

- Q2
- Q1
- Q4
- Q4
- Q4
- Q1
- Q3
- Q2
- Q4
- Q4
- Q2
- Q1
- Q1
- Q1
- Q4
- Q2
- Q4

WORKING TOGETHER, IMPROVING LIVES

PRIORITY: Ensure that Scottish Borders Council is effective, sustainable, responsive and aligned to the needs and priorities of our communities.



Outcomes

- Services are designed to meet people's needs
- Community action is facilitated and supported by complementary actions by SBC
- Inequality is reduced through targeted activity with all partners
- Digital technology is maximised to make service delivery better
- Better outcomes are delivered through effective partnership working

Action

- Undertake extensive redesign of all business processes to put customers at their heart – First phase Social Work
- Undertake a comprehensive analysis of all available customer intelligence and surveys to determine gaps and areas for priority in the Council Plan 2024-2025
- Fully implement the new Performance Management Framework, including a self evaluation for all SBC services
- Implement changes to project planning process to ensure closer working with communities within all service redesign activities
- A new process will be implemented to ensure that all new policies, service changes and major developments will be informed by a transparent impact assessment, which is published and easily accessible
- Review the delivery of the Inequalities Strategy and the Child Poverty Strategy
- Implement a comprehensive Programme of Digital Transformation (Pathfinder Programme) across Social Work Services
- Implement new customer access channels and tools, including a renewed website & more online functionality
- Develop, consult & launch a new Community Plan that sets out key partnership priorities and actions for the Scottish Borders
- Work in partnership with all key local partners to implement an agreed Digital Strategy, action plan and investment opportunities plan for the Scottish Borders
- Explore all opportunities for sharing staffing resources with all key partners as part of the service/financial/people planning processes

Quarter

Q4

Q4

Q4

Q1

Q1

Q2

Q3

Q3

Q2

Q3

Q4



CHAPTER 3: LOCALITY ACTIONS



Locality Actions

BERWICKSHIRE: This page presents priority work for Berwickshire for the coming year. Many of the projects are led by others working in our communities and we will take an enabling approach to provide advice and practical support to help others deliver.



Clean Green Future

Coastal defences: Develop an asset management plan for coastal defences in Berwickshire

Climate and Nature: Support community-led initiatives that contribute to tackling climate change and nature loss

Community Food Growing: Support Community Growing Initiatives across Berwickshire Communities (including with Ayton, BAVs, Cockburnspath, Coldingham, Duns, Eyemouth, and Foulden)



Fulfilling Our Potential

Eyemouth: Present proposals for new Eyemouth Primary School, Early Years and Family Centre provision to the community.

Mid-Berwickshire: Undertake an options appraisal to determine opportunities for integrated community use of facilities in Swinton Primary



Strong Inclusive Economy, Transport and Infrastructure

Demand Responsive Transport Pilot: Continue testing the viability of Demand Responsive Transport (Pingo) and Mobility as a Service, empowering communities through the use of flexible public transport

Eyemouth Waterfront Regeneration: In partnership with the local community, regenerate the Old Fishmarket and the Sea Garden on Eyemouth Waterfront

Borderlands Business Infrastructure: Start construction of business units at Coldstream for micro and small-sized businesses (Borderlands Inclusive Growth Deal)



Empowered, Vibrant Communities

Eyemouth Town Plan: Support the Eyemouth Community in developing a Town Plan and Associated Investment Plan as part of the Borderlands Place Programme

Berwickshire Place Making: Support the Berwickshire Area Partnership's Place Making Working Group in collaborating with interested communities to develop community-led place plans

Berwickshire Area Partnership: Strengthen the role of the Area Partnership through the completion of the Review of Area Partnerships and implementation of its recommendations and, in particular, strengthen its role in the oversight of place making, development of a locality plan and the widening of engagement with Community Planning Partners in this process



Good Health and Wellbeing

Eyemouth Extra Care Housing: Develop a proposal for Extra Care Housing in the Eyemouth area in conjunction with our strategic housing providers

Integrated working: Develop locality huddles and locality planning groups to deliver joined up services, focused on local needs. Re-ablement teams will work to help people regain confidence and daily living skills after illness

Locality Actions

CHEVIOT: This page presents priority work for Cheviot for the coming year. Many of the projects are led by others working in our communities and we will take an enabling approach to provide advice and practical support to help others deliver.



Clean Green Future

Climate and Nature: Support community-led initiatives that contribute to tackling climate change and nature loss

Community Food Growing: Support Community Growing Initiatives at Kelso Abbey Community Orchard and Kelso Community Food Garden

Green Learning Spaces: Develop Broomlands Primary School Community Eco Garden and Kelso High School Bees and Bushcraft



Fulfilling Our Potential

Jedburgh: Expand opportunities for intergenerational learning and opportunities within the new campus environment

Working with partners: Develop employment and skills pathways across Roxburgh estates



Strong Inclusive Economy, Transport and Infrastructure

Jedburgh Corner Building: Begin the restoration of this key town centre site

Old School Site Jedburgh: Following consultation, begin work around this key local asset



Empowered, Vibrant Communities

Jedburgh Town Plan: Support the Jedburgh Community in developing a Town Plan and Associated Investment Plan as part of the Borderlands Place Programme

Cheviot Place Making: Support the Cheviot Area Partnership's Place Making Working Group in working with interested communities to develop community-led place plans

Cheviot Area Partnership: Strengthen the role of the Area Partnership through the completion of the Review of Area Partnerships and implementation of its recommendations. In particular, strengthen its role in the oversight of place making, the associated development of a locality plan and the widening of engagement with Community Planning Partners in this process



Good Health and Wellbeing

Kelso Extra Care Housing: Open 36 newly built one bedroom Extra Care Housing properties in Kelso (Summer 2023)

Amenity Housing: In partnership with our strategic housing providers develop model for Amenity Housing within the Kelso Extra Care Housing development site

Integrated working: Develop locality huddles and locality planning groups to deliver joined up services, focused on local needs. Re-ablement teams will work to help people regain confidence and daily living skills after illness

Locality Actions

EILDON: This page presents priority work for Eildon for the coming year. Many of the projects are led by others working in our communities and we will take an enabling approach to provide advice and practical support to help others deliver.



Clean Green Future

Flood Management: Develop flood risk management strategy and plan for Earlston, and a flood scheme preparation assessment for Ettrick Valley

Environmental and biodiversity improvements: Progress biodiversity improvements to Gala Waterfront, the Mill Lade, Greenspace Regeneration Selkirk, and the Mauldsheugh Wood Nature Trail

Climate and Nature: Support community-led initiatives that contribute to tackling climate change and nature loss



Fulfilling Our Potential

Earlston Primary School and Health Centre co-location: Continue construction of new primary school, library and Health Centre in Earlston and begin to implement opportunities for intergenerational projects

Galashiels Academy Campus: Begin construction of the new Academy in Galashiels and engage with community groups to ensure full social value benefits are realised

Inspire Tweedbank: Implement programme of opportunities for digital skills development, utilising Inspire Learning Tweedbank Centre of Digital Excellence



Strong Inclusive Economy, Transport and Infrastructure

The Great Tapestry 5G Innovation Centre: Continue work with LiveBorders, Inspire Learning, and Traveltech on a pioneering education project focusing on digital access and online experience.

Tweedbank Extension: Complete the first phase of the enabling infrastructure (including roads, digital connection, etc.) for the Council's marquee project at Tweedbank.



Empowered, Vibrant Communities

Galashiels Town Plan: Support the Galashiels Community in developing a Town Plan and Associated Investment Plan as part of the Borderlands Place Programme.

Selkirk Town Plan: Support the development of a Town/TD7 Team in Selkirk and surrounding area and the associated development and delivery of a community-led action plan

Eildon Place Making: Support the Eildon Area Partnership's Place Making Working Group in working with interested communities to develop community-led place plans

Eildon Area Partnership: Strengthen the role of the Area Partnership through the completion of the Review of Area Partnerships and implementation of its recommendations. In particular, strengthen its role in the oversight of place making, the associated development of a locality plan and the widening of engagement with Community Planning Partners in this process.



Good Health and Wellbeing

Tweedbank Care Village: Commence build on the Tweedbank Development namely the Care Village, Complex Care Unit and the Young Persons Complex Care unit

Integrated working: Develop locality huddles and locality planning groups to deliver joined up services, focused on local needs. Re-ablement teams will work to help people regain confidence and daily living skills after illness.

Locality Actions

TEVIOT AND LIDDESDALE: This page presents priority work for Teviot and Liddesdale for the coming year. Many of the projects are led by others working in our communities and we will take an enabling approach to provide advice and practical support to help others deliver.



Clean Green Future

Flood Protection: Develop the Hawick Flood Protection scheme, a flood risk management, strategy and plan for Newcastleton, including a bund, and a flood scheme preparation assessment for Whitelaw/ Crowbyres.

Climate and Nature: Support community-led initiatives that contribute to tackling climate change and nature loss



Fulfilling Our Potential

Hawick High School: Continue to develop design for Hawick High School and engage with stakeholders and community to ensure all opportunities are identified.

Newcastleton Primary School: Develop partnership between the School and Community Development Trust to implement supports such as breakfast club and wellbeing activities for young people.



Strong Inclusive Economy, Transport and Infrastructure

Hawick Business Centre: Continue the construction of a multi-disciplinary business centre offering a mix of private and co-op offices on the site of the derelict shopping centre.

Hawick Active Travel Network: Progress the development of cycling and walking paths alongside the flood protection scheme.

Infrastructure: In collaboration with Scottish Power Energy Network (SPEN), deliver upgrades to the electricity infrastructure essential for future households and the deployment of electric vehicles.



Empowered, Vibrant Communities

Hawick Town Plan: Support the Hawick Community in developing a Town Plan and Associated Investment Plan as part of the Borderlands Place Programme.

Teviot & Liddesdale Place Making: Support the Teviot & Liddesdale Area Partnership in working with interested communities to develop community-led place plans.

Teviot & Liddesdale Area Partnership: Strengthen the role of the Area Partnership through the completion of the Review of Area Partnerships and implementation of its recommendations. In particular, strengthen its role in the oversight of place making, the associated development of a locality plan and the widening of engagement with Community Planning Partners in this process.



Good Health and Wellbeing

Hawick Care Village: Develop a full business case for the Hawick Care Village

Hawick Extra Care Housing Development: Draft a delivery plan for Extra Care Housing in Hawick

Hawick Learning Disability supported living: Develop a full business case for the Hawick Learning Disability Supported Living provision.

Integrated working: Develop locality huddles and locality planning groups to deliver joined up services, focused on local needs. Re-ablement teams will work to help people regain confidence and daily living skills after illness.

Locality Actions

TWEEDDALE: This page presents priority work for Tweeddale for the coming year. Many of the projects are led by others working in our communities and we will take an enabling approach to provide advice and practical support to help others deliver.



Clean Green Future

Flood Protection: Develop flood risk initiatives, including flood risk management strategies and plans for Peebles, Innerleithen, and Broughton.

The Eddleston Water Project: Investigate the effectiveness of natural flood management (NFM) techniques and habitat restoration measures at a catchment scale

Climate and Nature: Support community-led initiatives that contribute to tackling climate change and nature loss.



Fulfilling Our Potential

Peebles High School: Begin construction of the new high school in Peebles and engage with young people, their families and the community to support transition to new models of learning and service delivery

Eddleston: Explore opportunities for outdoor learning spaces in Eddleston



Strong Inclusive Economy, Transport and Infrastructure

Mountain Bike Innovation Centre: Continue to work with SOSE and Napier University in the development of a Mountain Bike Innovation Centre at Cairlee Mill

Cycling World Championships 2023: Seize the opportunity provided by the CWC to promote cycling, and economic and business opportunities across the whole region



Empowered, Vibrant Communities

Tweeddale Place Making: Support the Tweeddale Area Partnership's Place Making Working Group in working with interested communities to develop community-led place plans

Tweeddale Area Partnership: Strengthen the role of the Area Partnership through the completion of the Review of Area Partnerships and implementation of its recommendations and, in particular, strengthen its role in the oversight of place making, the associated development of a locality plan and the widening of engagement with Community Planning Partners in this process



Good Health and Wellbeing

Peebles Extra Care Housing development: Develop a business case for Extra Care Housing In Peebles

Integrated working: Develop locality huddles and locality planning groups to deliver joined up services, focused on local needs. Re-ablement teams will work to help people regain confidence and daily living skills after illness