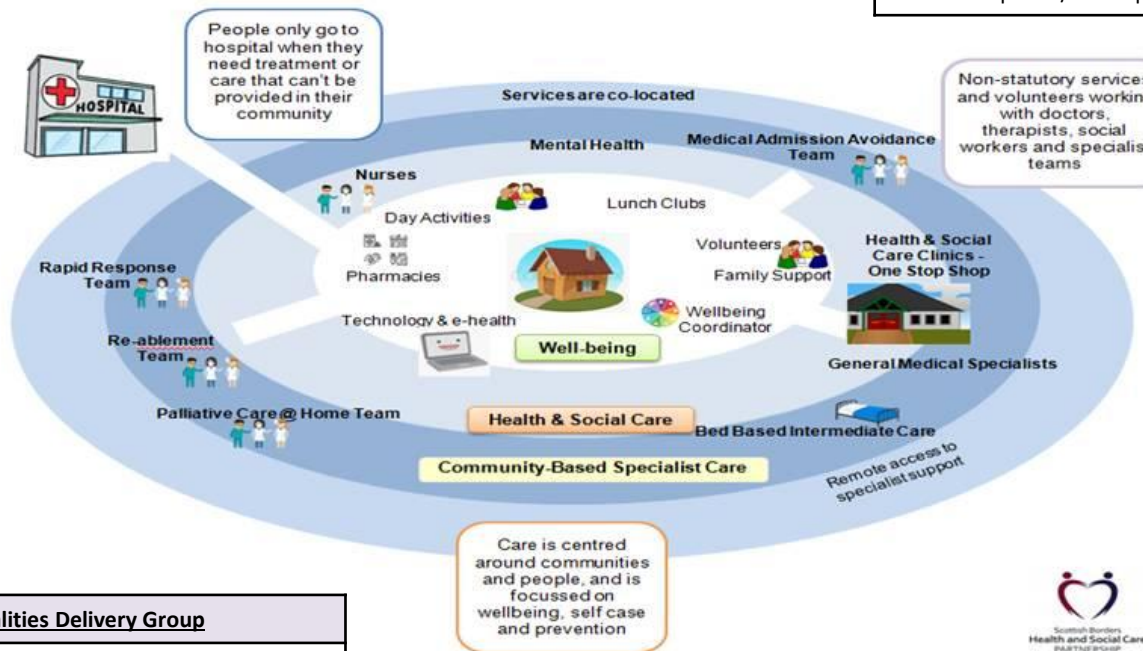


TEC, Aids & Adaptations Group

- o Development of TEC
- o Development of Care & Repair
- o Development of Aids & Adaptations

Accommodation Group

- o Care Village development
- o Dementia/Mental Health accommodation development
- o Existing care home development
- o New care home development
- o ECH development
- o Community Hospital options/development
- o BGH options/development



Commissioning Group

- o Commissioning the services and staff required to deliver the strategy
- o Re-commissioning existing contracts
- o New contracts
- o Monitoring contractual delivery
- o Policies, procedures, processes required to support the contracts
- o Out of hours

H&SC Localities Delivery Group

- o Development of Community Services
- o Improved Community Co-ordination
- o Development of the Workforce (i.e. To care for Older People)
- o Development of information and advice
- o Development of care at home, including reablement, transitional care and hospital to home
- o Intermediate care
- o Respite
- o Step up/down discharge
- o Single assessment
- o MDTs



Community Group

- o Support Locality Working Groups
- o Support Carers, Local Area Co-ordinators and Community Capacity Building
- o Campaigns and Communication